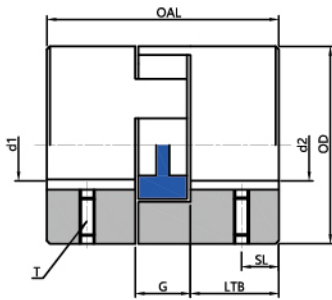
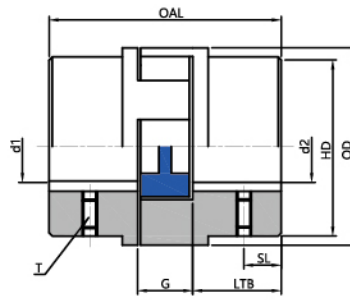


- Used Standard elastomer
- Suitable for applications requiring smaller mass and moment of inertia, better corrosion resistance.
- Torsional flexibility, zero maintenance.
- Light mass, small moment of inertia.
- Damping impact and vibration.
- Axial plug-in, fail-safety.
- Full processing, good dynamic properties.
- Refer to document No. 04.101 for installation, operation and maintenance instructions.



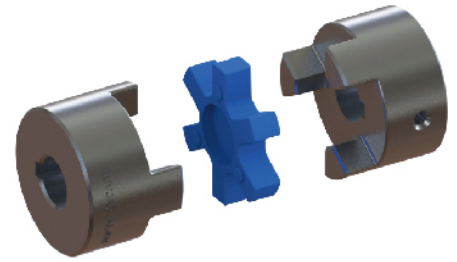
Type 1

Fig 04.24



Type 2

Fig 04.25



04.19

Size	Type	Rated Torque Nm			Dimension mm								Screw	
		NBR	TPU	Hytrel	d1-d2	OAL	LTB	G	OD	HD	CD	SL	T	T _A
-	-	3.0	4.5	5.6	6-16	43.43	15.75	12.19	27.43	27.43	27.43	7.87	M4	2.0
AL050	1	3.0	4.5	5.6	6-16	43.43	15.75	12.19	27.43	27.43	27.43	7.87	M4	2.0
AL070	1	4.9	7.3	12.9	6-19	50.80	19.05	12.70	34.54	34.54	34.54	9.65	M6	5.0
AL075	2	10.2	15.3	25.6	6-22	53.85	20.57	12.70	44.45	38.86	38.86	7.87	M6	5.0
AL090	2	16.3	24.4	45.3	13-22	59.44	23.11	13.21	53.85	38.86	38.86	8.64	M6	5.0
AL095	1	21.9	32.9	63.4	13-29	63.50	25.40	12.70	53.85	53.85	53.85	11.18	M8	10
AL099	2	35.9	53.9	89.5	13-30	71.37	26.16	19.05	64.26	52.32	52.32	11.18	M8	10
AL100	2	47.1	70.7	128.0	13-35	88.90	34.80	19.05	64.26	61.21	61.21	11.18	M8	10
AL110	1	89.5	134.0	256.0	16-41	107.95	42.93	22.10	84.07	84.07	84.07	19.05	M8	10
AL150	2	140.0	210.0	419.0	16-48	114.30	44.45	25.40	107.95	81.03	81.03	16.00	M8	10

- D is the bore diameter, the metric cylindrical bore executes GB3852-2107 standard, tolerance H7, flat keyway, also executes GB/T1095-2003 standard, tolerance JS9. The inch bore implements the AGMA9002-C14 standard, the bore is a clearance fit, and the keyway is a commercial grade.
- Hexagon socket set screw with cup point, comply with GB/T80-2007, aluminum alloy material, performance grade AL5. TA indicates the tightening torque (unit: Nm).